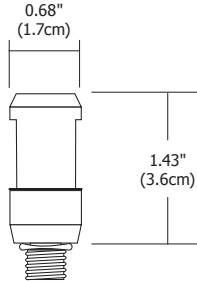
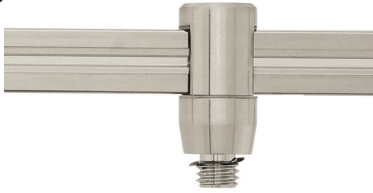


MONORAIL FAST JACK CONNECTORS

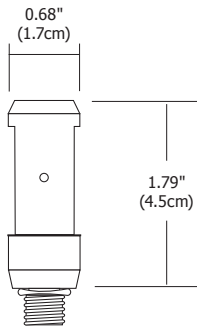
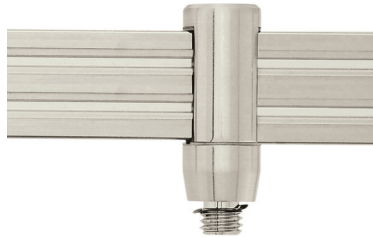


Monorail Fast Jack Fixture Connector

The Monorail Fast Jack Fixture Connector attaches any Fast Jack head or pendant to Monorail. Satin nickel, polished nickel or antique bronze finish.

Weight:
.10 lb (.045 kg)

System	Type	Finish
MC	FJ	SN
MC Monorail Connector	FJ Fast Jack	SN Satin Nickel PN Polished Nickel BZ Antique Bronze

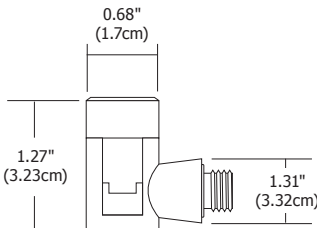
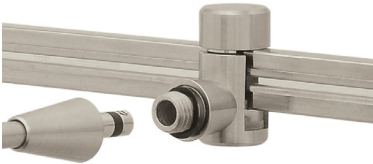


Monorail 2 Circuit Fast Jack Fixture Connector

The Monorail 2 Circuit Fast Jack Fixture Connector attaches any Fast Jack head or pendant to Monorail 2 Circuit. Satin nickel, polished nickel or antique bronze finish.

Weight:
.12 lb (.054 kg)

System	Type	Finish
M2C	FJ	SN
M2C Monorail 2 Circuit Connector	FJ Fast Jack	SN Satin Nickel PN Polished Nickel BZ Antique Bronze



Monorail Wall Fast Jack Fixture Connector

The Monorail Wall Fast Jack Fixture Connector attaches select Fast Jack heads to Monorail Wall. Satin nickel, polished nickel or antique bronze finish.

Weight:
.11 lb (.045 kg)

System	Type	Finish
MWC	FJ	SN
MWC Monorail Wall Connector	FJ Fast Jack	SN Satin Nickel PN Polished Nickel BZ Antique Bronze

PROJECT:

FIXTURE TYPE:

DATE: