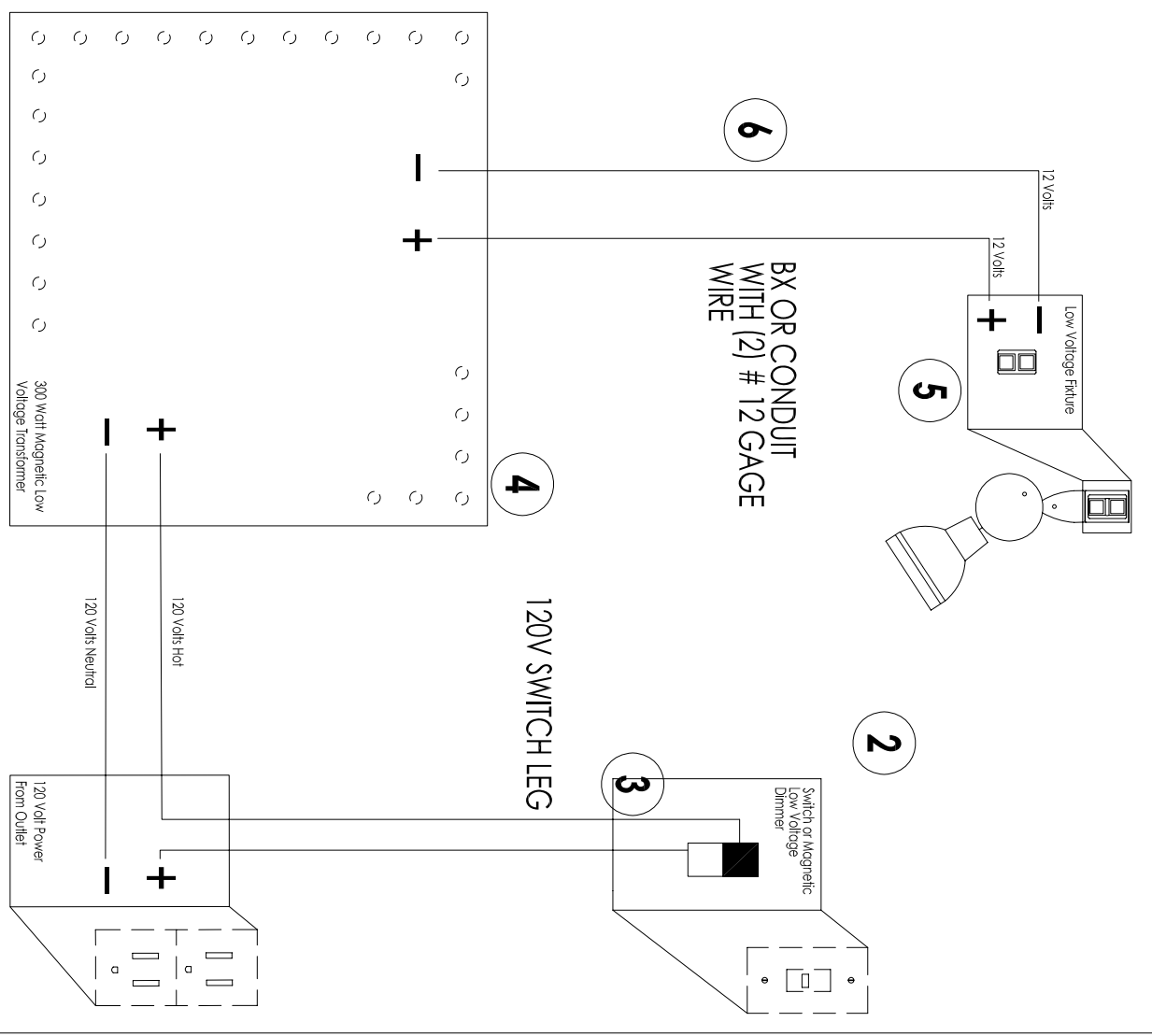


INSTALLATION INSTRUCTIONS

1. Turn off power at electrical panel
**make sure you turn off the correct breaker
2. Install a single gang junction box for a switch or magnetic low voltage dimmer directly above existing outlet
3. Run two black #12 gage wires in BX or conduit from junction box to outlet leaving enough extra wire to reach transformer
4. Install the 300 Watt or for 2 circuit 600 watt Recessed Wall Mounted Transformer next to the existing wall outlet
5. Install the low voltage lighting system and then the canopy box at correct height to feed power to the system.
6. Run two #10 gage braded wires from wall/ceiling canopy box to Recessed Wall Mounted Transformer



215 West Chicago, Chicago, IL 60610, 1.312.944.1000-Direct, 1.312.2540197-Fax, www.lightology.com
 1718 W. Fullerton Ave Chicago, IL 60618, 1.773.883.6111-Direct, 1.773.883.6163-Fax
 © 2005, LIGHTOLOGY LLC

