



Compatible System Connectors



**FJ-LOW-1-SN-S1-SN**  
Satin Nickel with Satin Nickel S1 Shade



**FJ-LOW-1-BZ-S2-BZ**  
Antique Bronze with Antique Bronze S2 Shade



**FJ-LOW-1-BZ-S1-BZ**  
Antique Bronze with Antique Bronze S1 Shade



**FJ-LOW-1-BZ-S3-AM-BZ**  
Antique Bronze with Antique Bronze S3 Amber Shade



**FJ-LOW-1-BZ-S5-BZ**  
Antique Bronze with Antique Bronze S5 Shade



**FJ-LOW-1-SN-S2-PN**  
Satin Nickel with Polished Nickel S2 Shade & LED MR16 lamp



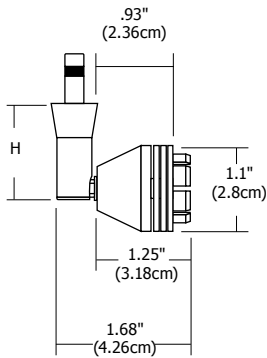
**FJ-LOW-1-PN-S1-PN**  
Polished Nickel with Polished Nickel S1 Shade



**FJ-LOW-1-SN-S3-WH-SN**  
Satin Nickel with Satin Nickel S3 White Shade



**FJ-LOW-1-PN-S5-PN**  
Polished Nickel with Polished Nickel S5 Shade



### Description:

Petite yet versatile, the classic Low Rider spotlight rotates 360° and tilts 90°. Select from a variety of shades to personalize the timeless design. The fixture is LED compatible when using the S2 Mesh Shade.

### System Compatibility:

Monorail (M) or Monorail 2 Circuit (M2). Use Fast Jack connector (FJ) for ordering canopy mount or track transformer (sold separately)

### Height:

1.2" (3cm), 3" (7.6cm), 6" (15.2cm), 12" (30.5cm) or 18" (45.7cm)

### Finish:

Satin Nickel, Polished Nickel or Antique Bronze

### Lamp Specifications:

Maximum 50 watt IR MR16 lamp GU5.3 base - 12 or 24 volt (sold separately)  
LED MR16-12VAC compatible with S2 Mesh Shade only (sold separately)

### Required Shades (sold with Low Rider or separately):

S1 - Little Solid Shade, S2 - Little Mesh Shade, S3 - Round Glass Shade or S5 - Big Solid Shade

See Accessories Spec Sheet for Complete Details

### Optical Accessories (sold separately):

Hexcell Louver, Glass Lenses or Snoot

### Weight:

.40 lb (.18 kg)

System		Fixture		Height (H)		Finish		SHADE ACCESSORY CODE			
Accessory	Glass Color*	Finish	Accessory	Glass Color*	Finish	Accessory	Glass Color*	Finish	Accessory	Glass Color*	Finish
<b>FJ</b>		<b>LOW</b>	<b>1</b>	<b>SN</b>	<b>S3</b>	<b>AM</b>	<b>SN</b>	<b>S1</b>	<b>AM</b>	<b>SN</b>	
<b>FJ</b> Fast Jack		<b>LOW</b> Low Rider	<b>1</b> 1.2" (3cm)	<b>SN</b> Satin Nickel	<b>S1</b> Little Solid Shade	<b>AM</b> Amber	<b>SN</b> Satin Nickel (S1, S3, S5)	<b>S2</b> Little Mesh Shade	<b>WH</b> White	<b>PN</b> Polished Nickel (S1, S2, S3, S5)	
<b>M</b> Monorail			<b>3</b> 3" (7.6cm)	<b>PN</b> Polished Nickel	<b>S3</b> Round Glass Shade	* Leave blank for S1, S2, S5	<b>BZ</b> Antique Bronze	<b>S5</b> Big Solid Shade		<b>BK</b> Black (S1, S2)	
<b>M2</b> Monorail 2 Circuit			<b>6</b> 6" (15.2cm)								
			<b>12</b> 12" (30.5cm)								
			<b>18</b> 18" (45.7cm)								

Compatible System Connectors



PROJECT:

FIXTURE TYPE:

DATE: