




**Founder of Edge Lighting**

- The team is led by Gregory Kay, award winning, low-voltage lighting designer and founder of Tech Lighting, Lightology and Edge Lighting
- Best known for his MonoRail, Kable Lite and Freejack designs
- Has won numerous awards including:
  - IESNA/IIDA Edwin F. Guth Award (1988)
  - IESNA International Illumination Design Award of Merit (1997)
  - Lightfair International Award for Best New Product Design (1999 and 2003)



**What is the goal of architectural lighting design?**



**Lighting Design**

**Goals**

- Accent Key Features of Architecture
- Create Atmosphere
- Direct Focus
- Light Task
- What Emotion Are You Trying To Convey?



## Lighting Design

### Permanent Accent Lighting

#### Benefits

- Clean Ceiling Lines
- Focus Off Ceiling
- Glare Free Fixtures

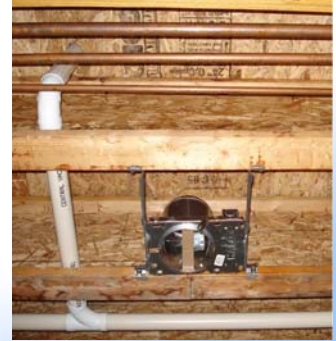


## Lighting Design

### Permanent Accent Lighting

#### Drawbacks

- Fixed Location
- Limited Fixture Placement Due to Conflicts Above Ceiling
- Limited Aiming Ability



## Lighting Design

### Traditional Track Systems

#### Benefits

- Adjustable Location
- Mounts Below Ceiling Line
- Adds Decorative Layer

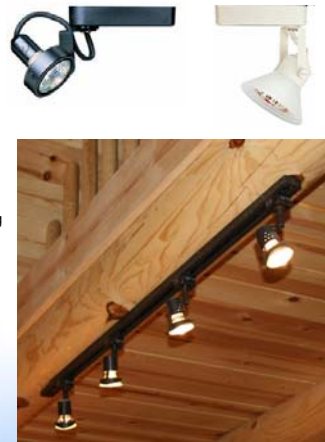
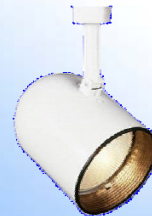


## Lighting Design

### Traditional Track Systems

#### Drawbacks

- Unsightly Transformers
- Limited to Straight Lines
- Track Should Be Hidden on Ceiling

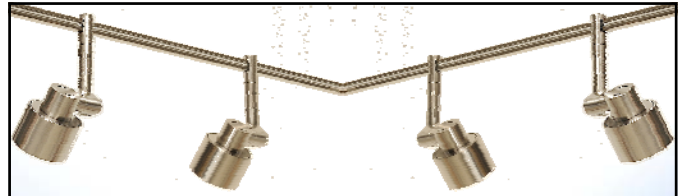
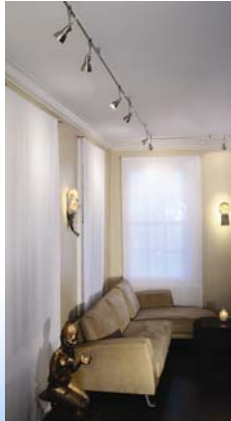


## Lighting Design

### Monorail Systems

#### Benefits

- Remote Located or Decorative Transformers
- Hand Bendable Curved Shapes
- Rail Becomes a Decorative Element



#### Mission

Develop and manufacture specification grade, energy efficient fixtures that exhibit superior craftsmanship and aesthetics, while utilizing the latest in engineering technologies.

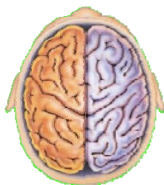
**Edge**  
LIGHTING

#### Technical

- Provide good quality light at the task
- Responsible use of energy
- Flexibility of design to meet the changing needs of the space

#### Emotional

- Guide the mood of the space
- Establish a visual hierarchy and direct focus
- Complement the architecture and interior design



#### The new generation...



The biggest improvement in Track systems in over 40 years.  
The biggest improvement in Monorail systems in over 15 years.

**Edge**  
LIGHTING

The new generation...



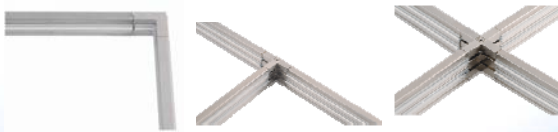
- Low profile rail. Mounts just 1" from ceiling
- Low profile Power Feed Canopies
- Low profile Surface Mount Transformers

The new generation...



- No Tools Needed
- Conductive Connectors Make Flush, Clean and Secure Connections
- Installer Can Never Forget to Tighten Screws

The new generation...



- "L", "T", and "X" Connectors Have a Simple and Clean Look.

The new generation...



- All Slope Ceiling Standoffs and Power Feeds ship as a Complete Unit for Ease of Installation on the Job Site.

### The new generation...



Polished Nickel



Satin Nickel



Antique Bronze

- All Finishes use a High Quality Electroplating Process
- Polished Nickel Finish has a Contemporary Warm Color Quality

### Monorail Standards...



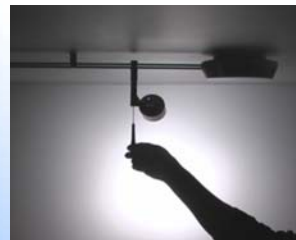
- Edge Lighting Offers a Wide Range of Standard Monorail Heads

## Pro Aim

**Edge**  
LIGHTING

### Hot Aiming

Keep Lamps Burning at Full Brightness  
While you Focus the Room



- Self Locking Tilt
- Locking Rotation
- Locking Lens Position

**Pro Aim**



**Self Locking Tilt**

- Focus Point Does Not Drift During Tightening

**Pro Aim**



**Locking Rotation**

- Keep the Light Where you Want it

**Pro Aim**



**Locking Lens Position**

- Integrity of Design Remains Intact During Re-lamping

**LED Monorail Heads**



- Proper Heat Sink
- 50,000 Hour 3 Year Guarantee
- Replaceable LEDs
- Dim with Standard MLV Dimmer
- Operates on Same 12VAC Rail System as Halogen Fixtures

### Nautilus LED Wall Wash



- 3:1 Ratio provides even light from floor to ceiling
- 4'x10' Even Wash with Fixture positioned 2' From Wall
- 3000K 82CRI
- No Additional Driver or Power Supply Needed on Rail

### Atlas LED



- 24W LED Equal to 60W Halogen PAR
- 15° or 35° Field Angle Range
- 3000K 82CRI

## Easy Online Configurator

**Edge**  
LIGHTING

