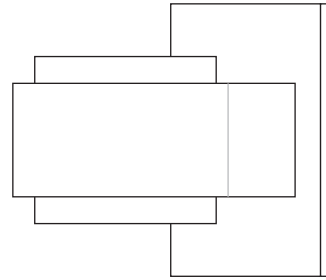


## Installation Instructions for **Beam**

### IMPORTANT SAFETY INSTRUCTIONS

To reduce the risk of fire, electrical shock, exposure to excessive UV radiation, or injury to persons:

- Use this fixture indoors only.
- Do not look directly at the lamp while the fixture is on.
- **RISK OF FIRE:** Use only the type of lamp and maximum wattage indicated in this instruction manual.
- Never cover the halogen lamp with anything other than a lamp shield provided by Edge Lighting and never place flammable material close to the fixture.
- Never turn the fixture on and off by connecting and disconnecting the halogen lamp.
- Do not touch the fixture head, shade or lamp shield while the fixture is on. These surfaces may be **VERY HOT**.
- Do not touch lamp at anytime. Use a soft cloth. Oil from skin may damage lamp.
- It is normal for a new halogen lamp to produce minor smoke when first turned on.
- Do not operate the luminaire with a missing or damaged shield.
- Turn power off and allow to cool before replacing lamp.



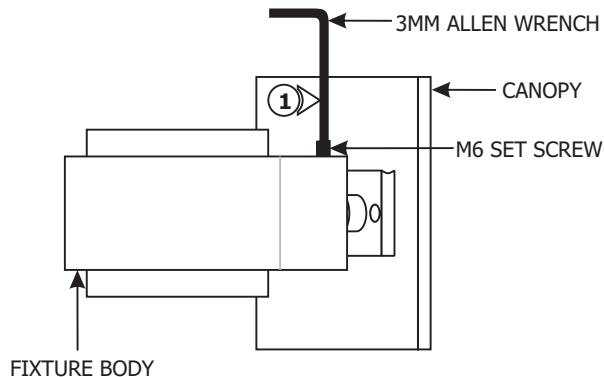
### IMPORTANT INFORMATION

- This product is ETL listed for indoor locations.
- This product is for wall mount applications only.
- This product can mount to either a 4" square electrical box with round plaster ring or an octagon electrical box.
- This product can be dimmed with a low voltage electronic dimmer.
- This instruction shows a typical installation for indoor.

**SAVE THESE INSTRUCTIONS!**

## Install the Fixture

**A**



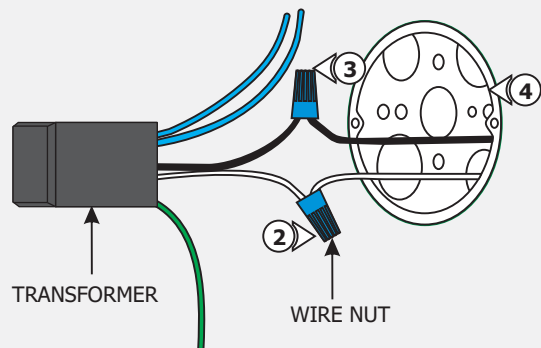
**1:** Loosen the two M6 set screws on the fixture body (**Do Not Remove**) with the provided 3mm Allen wrench and carefully pull the canopy out of the fixture body.

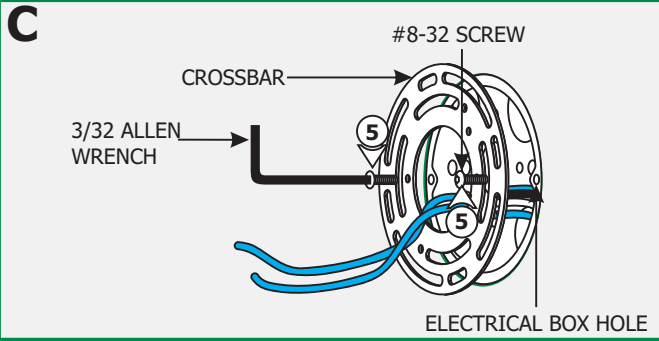
**2:** Connect the white transformer wire to the neutral power wire with a wire nut.

**3:** Connect the black transformer wire to the hot power wire with a wire nut.

**4:** Place the transformer and wire nut connections inside the electrical box.

**B**





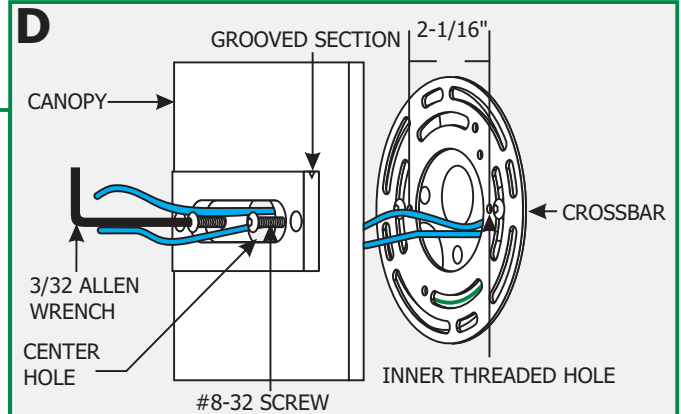
**NOTE:** The two center holes (spaced 2-1/16" apart) on crossbar should be oriented horizontally when mounting to the electrical box holes.

**5:** Mount the crossbar to the electrical box holes with the provided #8-32 screws using the 3/32 Allen wrench.

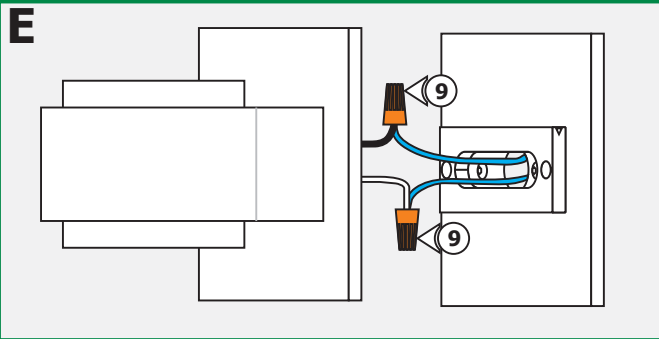
**6:** Make sure the crossbar and the transformer green wire are grounded in accordance with local electrical codes.

**7:** Feed the power wires through the canopy center hole. Make sure that the grooved edge on the canopy bracket is facing upward.

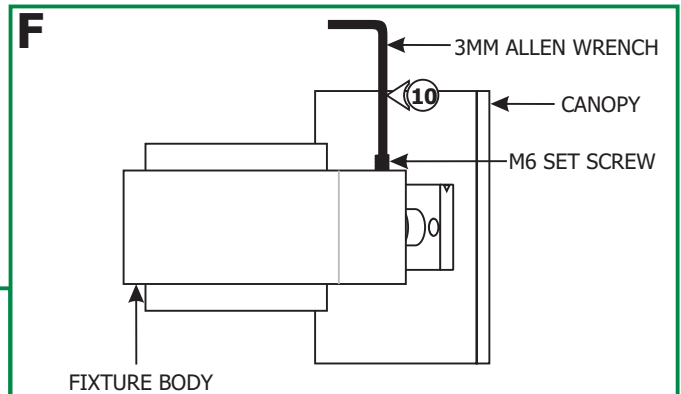
**8:** Mount the canopy to the crossbar inner threaded holes (spaced 2-1/16" apart) with the two provided #8-32 screws using the 3/32 Allen wrench.



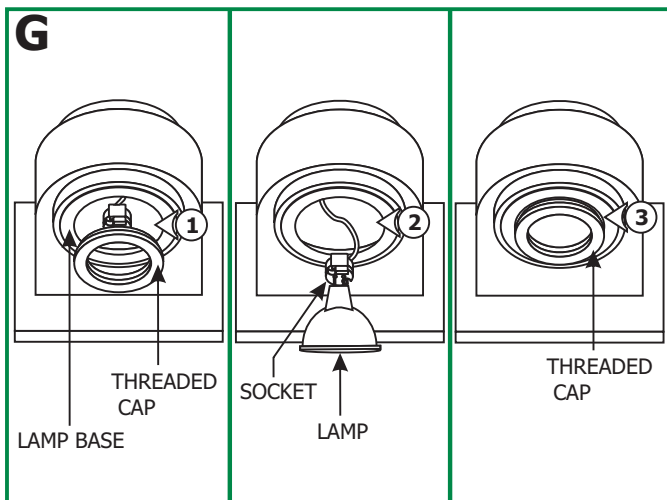
**9:** Connect each transformer low voltage wire (blue wire) to one fixture wire with a wire nut.



**10:** Place all wires and wire nut connections inside the fixture body. Slide the fixture body completely onto the canopy and tighten the two M6 set screws using the 3mm Allen wrench.



## Install the Lamp



**CAUTION:** To reduce risk of a burn or electrical shock during lamping, disconnect the power to the fixture.

Use **MAX 50** Watt, Type MR16 Front Glass Cover Halogen Lamp.



**1:** Loosen and remove the threaded cap to expose the socket.

**2:** Carefully pull the socket out, and push the lamp pins completely into the socket holes.

**3:** Properly place the socket and lamp inside the lamp base. Replace and tighten the threaded cap to the lamp base.