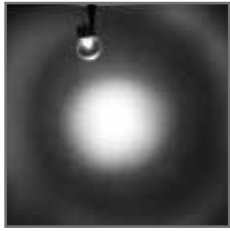

ACCESSORIES & LAMPS



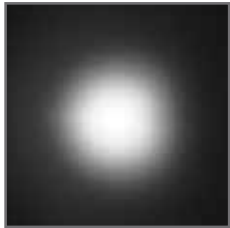
Create precision lighting by adding optical accessories such as lenses to shape beams or dichroic filters to adjust color temperatures of the various lamps.

APPLYING AND CONTROLLING LIGHT WITH GLASS LENSES



BARE LAMP

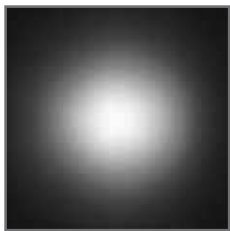
Many halogen bare lamps produce irregular round beam shapes with dark and light striations.



SOFT FOCUS UNIFORMITY LENS

The fine prism lens eliminates striations and increases the size of the beam about 10-15%.

ACCESSORY LENS	TYPE
ORDERING CODE L16	SF
L16 MR16 L30 PAR30 L111 AR111	SF Soft Focus



MEDIUM DIFFUSION LENS

The frosted lens softens and increases the size of beam about 15-20%.

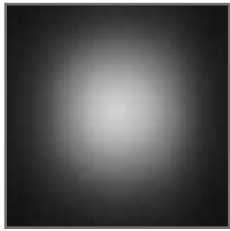
ACCESSORY LENS	TYPE
ORDERING CODE L16	MD
L16 MR16 L30 PAR30 L111 AR111	MD Medium Diffusion



WIDE DIFFUSION LENS

The prismatic lens enlarges the size of beam about 30-40% and is best used with narrow flood distribution lamps.

ACCESSORY LENS	TYPE
ORDERING CODE L16	WD
L16 MR16 L30 PAR30 L111 AR111	WD Wide Diffusion



WIDE DIFFUSION FROSTED LENS

The frosted prismatic lens eliminates striations and enlarges the size of the beam 35% - 50% with about 20% loss of light.

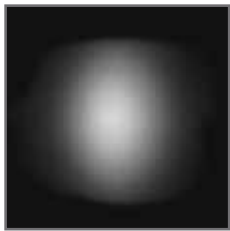
ACCESSORY LENS	TYPE
ORDERING CODE L16	WDF
L16 MR16 L30 PAR30 L111 AR111	WDF Wide Diffusion Frosted



LINEAR SPREAD LENS

The lens with linear prisms elongate the beam about 10° x 40° horizontally or vertically.

ACCESSORY LENS	TYPE
ORDERING CODE L16	LS
L16 MR16 L30 PAR30 L111 AR111	LS Linear Spread



LINEAR SPREAD FROSTED LENS

The frosted lens with linear prisms elongate and soften the beam about 15° x 60° horizontally or vertically.

ACCESSORY LENS	TYPE
ORDERING CODE L16	LSF
L16 MR16 L30 PAR30 L111 AR111	LSF Linear Spread Frosted



UV FILTER

UV filter blocks ultra violet radiation transmission below 400 nanometers, the range most responsible for UV degradation.

ACCESSORY LENS	TYPE
ORDERING CODE L16	UV
L16 MR16 L30 PAR30 L111 AR111	UV UV Glass



DICHROIC LENS

Dichroic lenses reflect unused wavelengths while passing wanted portions of spectrum. High in transmission, dichroics produce brighter, cleaner, saturated colors.

ACCESSORY LENS	DICHROIC COLOR												
ORDERING CODE L16	RD												
L16 MR16 L30 PAR30 L111 AR111	<table border="0"> <tr> <td>RD Red</td> <td>DY Daylight (3100-4250K)</td> </tr> <tr> <td>YL Yellow</td> <td>DB Dark Blue</td> </tr> <tr> <td>GR Green</td> <td>DP Dark Pink</td> </tr> <tr> <td>BL Blue</td> <td>IN Incandescent (2700-3200K)</td> </tr> <tr> <td>PH Peach</td> <td></td> </tr> <tr> <td>MG Magenta</td> <td></td> </tr> </table>	RD Red	DY Daylight (3100-4250K)	YL Yellow	DB Dark Blue	GR Green	DP Dark Pink	BL Blue	IN Incandescent (2700-3200K)	PH Peach		MG Magenta	
RD Red	DY Daylight (3100-4250K)												
YL Yellow	DB Dark Blue												
GR Green	DP Dark Pink												
BL Blue	IN Incandescent (2700-3200K)												
PH Peach													
MG Magenta													



DAYLIGHT COLOR CORRECTION LENS

Dichroic lenses change color temperature from 3100 to 4250K.

ACCESSORY LENS	DICHROIC COLOR
ORDERING CODE L16	DY
L16 MR16 L30 PAR30 L111 AR111	DY Daylight (3100-4250K)



INCANDESCENT COLOR CORRECTION LENS

Dichroic lenses change color temperature from 2700-3100K.

ACCESSORY LENS	DICHROIC COLOR
ORDERING CODE L16	IN
L16 MR16 L30 PAR30 L111 AR111	IN Incandescent (2700-3200K)

S1 Little Solid Shade

Small solid metal shade fits on Low Rider, Spirit, or Vespa and holds a single lens or louver using a Louver Lens Holder (included).

Lamp: Up to 37 watt IR MR16 for antique bronze or black and up to 50 watt MR16 for satin or polished nickel finishes



Low Rider
pp. 44-45



Spirit
pp. 46-47



Vespa
p. 51



ORDERING CODE	ACCESSORY	FINISH
S1	S1 Little Solid Shade	SN Satin Nickel PN Polished Nickel BZ Antique Bronze BK Black

S2 Little Mesh Shade

Small mesh metal shade fits on Low Rider, Spirit, or Vespa and holds a single lens or louver using a Louver Lens Holder (included). Low Rider becomes LED compatible using the S2 shade with an LED MR16 lamp.

Lamp: Up to 50 watt MR16



Low Rider
pp. 44-45



Spirit
pp. 46-47



Vespa
p. 51



ORDERING CODE	ACCESSORY	FINISH
S2	S2 Little Mesh Shade	PN Polished Nickel BK Black BZ Antique Bronze

S3 Round Glass Shade

Round glass shade fits on Low Rider, Spirit, or Vespa and holds two lenses or a combination of a louver and lens using the attached Louver Lens Holder.

Lamp: Up to 50 watt MR16.



Low Rider
pp. 44-45



Spirit
p. 46-47



Vespa
p. 51



ORDERING CODE	ACCESSORY	GLASS	FINISH
S3	S3 Round Glass Shade	WH Frost AM Amber	SN Satin Nickel PN Polished Nickel BZ Antique Bronze

S5 Big Solid Shade

Big solid metal shade fits on Low Rider or Spirit and holds a single lens or louver using a Louver Lens Holder (included).

Lamp: Up to 50 watt MR16



Spirit
pp. 46-47



Low Rider
pp. 44-45

ORDERING CODE	ACCESSORY	FINISH
S5	S5 Big Solid Shade	SN Satin Nickel PN Polished Nickel BZ Antique Bronze

S6 Round Solid Shade

Round metal shade fits on Chopper or Vespa and holds two lenses or a combination of a louver and lens using the attached Louver Lens Holder.

Lamp: Up to 37 watt IR MR16.



Chopper
p. 49



Vespa
p. 51

ORDERING CODE	ACCESSORY	FINISH
S6	S6 Round Solid Shade	SN Satin Nickel PN Polished Nickel BZ Antique Bronze BK Black

S7 Round Mesh Shade

Round mesh shade fits on Chopper or Vespa and holds two lenses or a combination of a louver and lens using the attached Louver Lens Holder.

Lamp: Up to 75 watt MR16.



Chopper
p. 49



Vespa
p. 51

ORDERING CODE	ACCESSORY	FINISH
S7	S7 Round Mesh Shade	PN Polished Nickel BZ Antique Bronze BK Black

Accessories

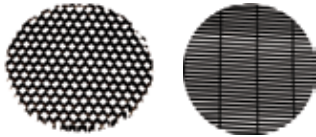
OPTICAL ACCESSORIES



MR16 LOUVER LENS HOLDER

MR16 Louver Lens Holders secure onto front of the lamp holding up two lenses or combination of a hexcell louver and lens.

ORDERING CODE	ACCESSORY	FINISH
LH16	Lens Holder MR16	SN
		PN Satin Nickel
		BZ Polished Nickel
		BK Antique Bronze
		BK Black



HEXCELL & MICRO LOUVER

The Hexcell Louver eliminates glare from the light beam.

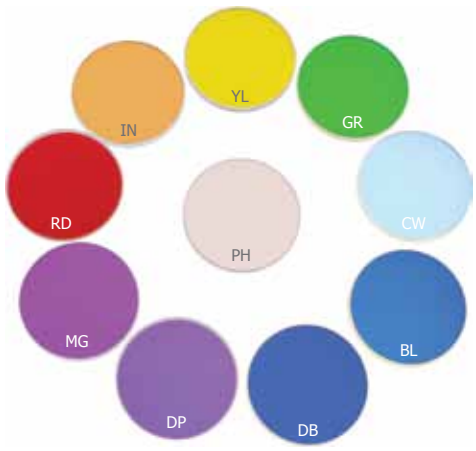
ORDERING CODE	ACCESSORY	TYPE
LO11	MR11	H Hexcell
LO16	MR16	M Micro
LO30	PAR30	L Louver
LO111	AR111	



SNOOT

The Snoot prevents glare and focuses the projected light from the lamp. The MR16 Snoot (ST16) requires a Louver Lens Holder (sold separately) when used with Low Rider, Low Rider Spinner, Chopper and Vespa.

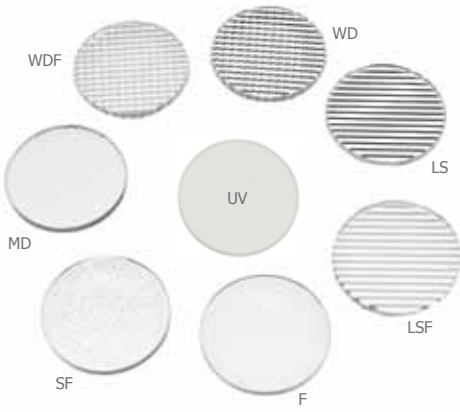
ORDERING CODE	ACCESSORY	FINISH
ST16	Snoot MR16	SN
		PN Satin Nickel
		BZ Polished Nickel
		WH Antique Bronze
		WH White (STP & ST30)
STP16	Snoot ProAim	
ST30	Snoot PAR30	



DICHROIC GLASS LENS

Dichroic lenses reflect unused wavelengths while passing wanted portions of spectrum. High in transmission, dichroics produce brighter, cleaner, saturated colors.

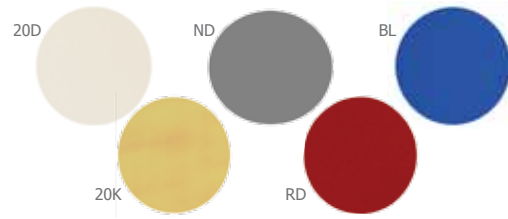
ACCESSORY LENS		DICHROIC COLOR	
ORDERING CODE	L16	RD	CW
L16	MR16	RD	Red
L30	PAR30	YL	Yellow
L111	AR111	GR	Green
		BL	Blue
		PH	Peach
		MG	Magenta
		DB	Dark Blue
		DP	Dark Pink
		IN	Incandescent (2700-3100K)
		25K	Warm White (2500K)
		27K	Warm White (2700K)



OPTICAL LENS

The soft focus lens reduces lamp glare, spread lenses elongate and diffuser lenses diffuse the light beam. UV filter lens allows quality light to pass through while blocking the ultra violet radiation.

ACCESSORY LENS		OPTICAL TYPE	
ORDERING CODE	L16	F	
L16	MR16	F	Frost
L30	PAR30	SF	Soft Focus
L111	AR111	MD	Medium Diffuser
		WD	Wide Diffuser
		WDF	Wide Diffuser Frost
		LS	Linear Spread
		LSF	Linear Spread Frost
		UV	UV Glass



DICHROIC FILM LENS FOR SUN3 & PORT

Dichroic film lenses and filters shape beam, change color or adjust color temperatures. Using a dichroic film reduces the light output by 55%. Louver lens holder required.

LENS FILM		LENS OR COLOR	
ORDERING CODE	LF1	20D	
LF1	Lens Film 1" diameter	20D	Refracts beam 20° down
LF2	Lens Film 2" diameter	20K	Dichroic 2000K Very Warm White
		27K	Dichroic 2000K + Color Correction Film=2700K Warm White
		ND	Neutral Density Filter dims 50%
		RD	Dichroic Red Film
		BL	Dichroic Blue Film
		LS	Linear Spread

ROSCO GOBOS

Expand your lighting repertoire. Choose from thousands of Rosco gobos to create the most unique lighting designs in various applications such as display, living room, theater room, childrens room, restaurant or clubs. Standard, Size D, gobos feature a 2.08" outer diameter with 1.04" image size. Shown below is a sampling of the numerous designs Rosco offers. Visit www.rosco.com/us to see a variety of other standard gobo options. For custom design quotes in steel or glass gobos, email the artwork in PDF format to info@edgelighting.com.

STANDARD (D-SIZE) STEEL GOBOS



77943-D



78090-D



78237-D



79501-D

STANDARD (D-SIZE) CRUSHED DICHROICS



33101-D
Red Ripple



33402-D
Amber Sparkelite



33102-D
Amber Ripple



33104-D
Cyan Ripple

STANDARD (D-SIZE) GLASS COLOR SCENES



86678-D
Venus de Milo Lisa Cuscuna



86680-D
St. Michel (St. Malo)



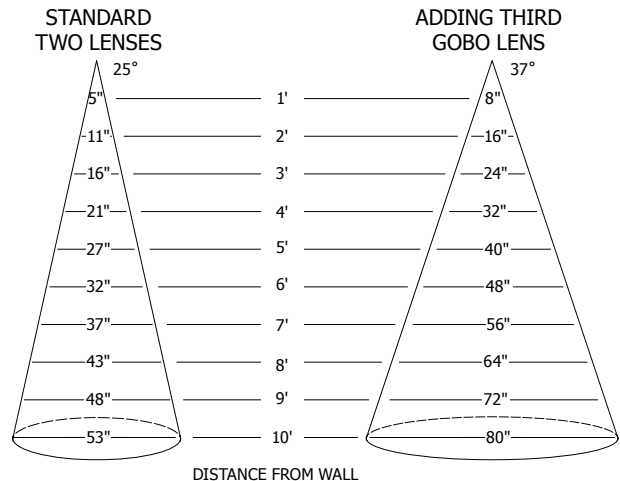
86682-D
Epiphany



86665-D
Galaxy Spiral

SIZE OF PROJECTED GOBO IMAGE

CUSTOM GLASS OR STEEL



HARLEY WITH GOBO HOLDER

FJ-HAR-5-GO-PN
Polished Nickel



The heavy-duty Harley with Gobo Holder projects focused light from a halogen or LED lamp; rotates 360°, tilts 180°. The light is shaped and magnified through the convex lenses and gobo. Gobos sold separately. Comes with snoot.

ORDERING CODE	SYSTEM	FIXTURE	HEIGHT	ACCESSORY	FINISH
FJ	HAR	5	GO	PN	
FJ Fast Jack M Monorail M2 Monorail 2 Circuit	HAR Harley	5 4.7"	GO Gobo Holder	PN Polished Nickel SN Satin Nickel	

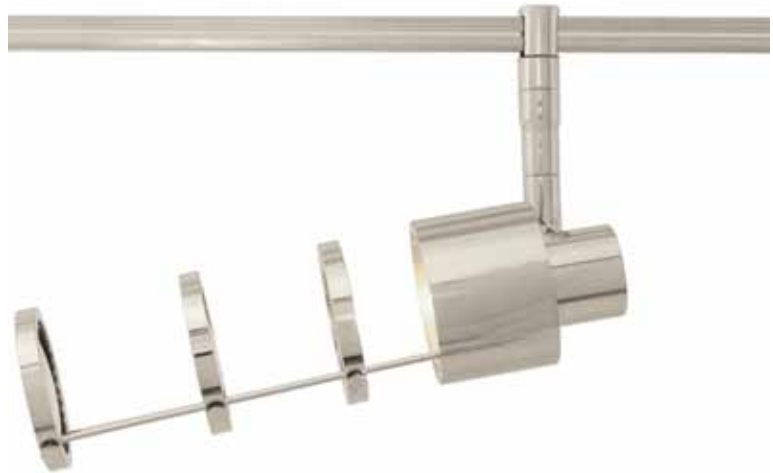
GOBO LENS ACCESSORY



Add this lens accessory to the Harley or Phi to project a larger image. The focused light is shaped and magnified through the convex lenses and gobo (sold separately).

ACCESSORY	TYPE	FINISH
A	GL	SN
A Accessory	GL Gobo Lens	SN Satin Nickel PN Polished Nickel

PHI WITH GOBO HOLDER



Edge
LIGHTING

An image projector that delivers a balance of form and function, the Phi with Gobo Holder shapes and magnifies focused light through the convex lenses and gobo. Gobo sold separately. The focus retention system allows precise hot-aiming and locks the 360° rotation, 180° tilt and optical lens orientation with an Allen screwdriver (included). Snap-off hood holds up to three accessory lenses and allows easy access for re-lamping while preserving focus.

ORDERING CODE	SYSTEM	FIXTURE	HEIGHT	ACCESSORY	FINISH
FJ	PHI	3	GO	SN	
FJ Fast Jack M Monorail M2 Monorail 2 Circuit	PHI Phi	3 3"	GO Gobo Holder	SN Satin Nickel PN Polished Nickel	



Accessories